

**SDD**  
SilcaDiagnosticDevice

**SBB**

**SW-NISSAN<sup>®</sup> -L0 (SDD/SBB)**

CODE: D431355XA - VERS. 3.0



## INDEX

<b>1</b>	<b>NISSAN®</b> .....	<b>3</b>
<b>2</b>	<b>FUNCTIONS MENU NISSAN®</b> .....	<b>4</b>
2.1	PROGRAMMING NEW KEYS .....	5
2.1.1	PROGRAMMING NEW KEYS (A) .....	5
2.1.2	PROGRAMMING NEW KEYS (B) .....	7
2.2	ERRORS .....	10
2.3	DELETING ERRORS .....	11

# SW-PRG. NISSAN®-L0 (SDD/SBB)

1

## NISSAN®




The functions on these vehicles are:

- Programme new keys (Max number of operational keys = 4);
- (PROG. NEW KEYS (A) and PROG. NEW KEYS (B));
- Read the errors present;
- Delete all errors.

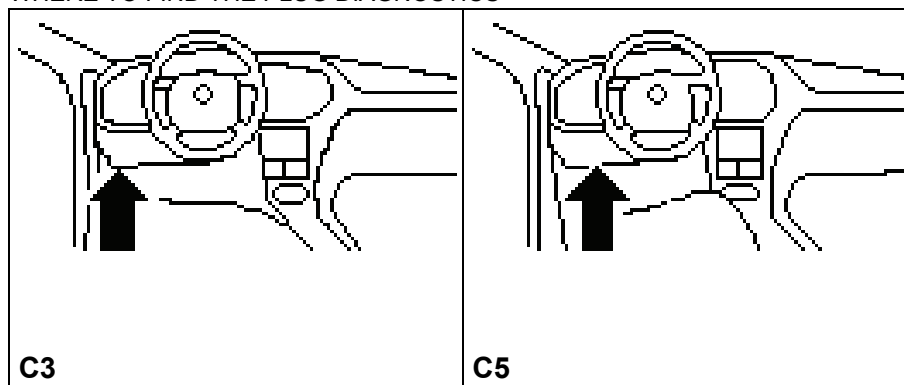
To make use of this function, use:

	 <p style="text-align: center;">SWITCH ADAPTER</p>
 <p style="text-align: center;">CABLE OBD II [00] (STANDARD)</p>	 <p style="text-align: center;">NISSAN ADAPTER [07] (OPTIONAL *)</p>
 <p style="text-align: center;">NISSAN CABLE [05] (OPTIONAL *)</p>	<p style="text-align: center;">Only for PROG. NEW KEYS (B) NOT for PROG. NEW KEYS (A)</p> <p style="text-align: center;"><b>PIN CODE</b></p> <p style="text-align: center;">Comprising 4 alphanumeric characters On an adhesive label attached to the vehicle maintenance booklet</p> <p style="text-align: center;">In the event of loss, apply to the dealer (see 1.1.2)</p>
<p>New and/or Old Keys (Max 4) (All those to be enabled)</p>	

OPTIONAL \* = STANDARD for SDD USA CAN BUS

SBB	CABLE/ADAPTER
	 <p style="text-align: center;">CABLE OBD II [00] (STANDARD)</p>
	 <p style="text-align: center;">NISSAN CABLE [05] (OPTIONAL)</p>

## WHERE TO FIND THE PLUG DIAGNOSTICS



## 2

## FUNCTIONS MENU NISSAN®

### SELECTING THE CAR MAKE

In this case SDD/SBB is able to automatically recognize the various central units connected and therefore uses the right communication procedure.

Simply identify:

- CAR MODEL
- YEAR OF MANUFACTURE
- TYPE OF FUEL (Petrol or Diesel)

With cars produced between 1998-99 that use the OBD II cable (00) SDD/SBB may be unable to recognize automatically the procedure to use. In such cases proceed as follows:

- Select MODEL ⇨ MODEL ⇨ YEAR, if communication does not take place between SDD/SBB and the central unit, the following message appears: ERROR 1 or ERROR 2 or ERROR 3 (see ch. "WARNING/ERROR MESSAGES" of the Operating manual). Fit the NISSAN® adapter and relaunch the procedure.

- NISSAN -	
MICRA	(96-98)
MICRA	(98-00)
MICRA	(00-)
> MICRA VAN	(00-00)
MICRA VAN	(00-)
PRIMERA	(97-98)

↑↓↔↷

- Use the ↑↓ arrow keys to select the make, then press **ENTER**;
- Press **ESC** to quit.

### FUNCTIONS MENU

This section allows the functions to be carried out, in particular to:

- Programme new keys in the immobilizer also when all the original keys are missing;
- Delete the code for a missing key from the immobilizer memory;
- Delete any errors in the immobilizer memory.

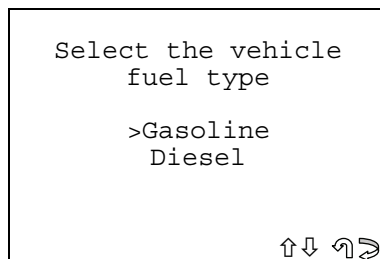
**ATTENTION:** the programming system for the NISSAN® group is structured so that every time programming takes place all the keys that will be used on the given car must be memorized again. It is therefore not possible to add/delete a single key individually.

If the wrong PIN CODE is entered 3-10 times consecutively, according to the model, the immobilizer central unit is blocked.

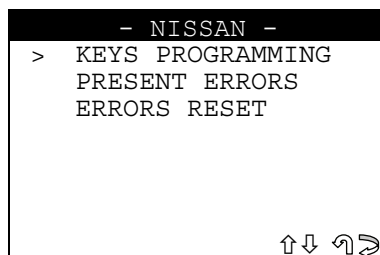
The menu for NISSAN® functions has the following structure:

- There is a key already in the ignition unit, turned to the **(ON)** position;

- The display shows:



- Select Petrol/Diesel and press **ENTER**;
- **No**, returns to the **Car selection menu**;
- **Yes**, proceeds with programming the keys;
- Press **ESC** to quit.



Select and press **ENTER**.

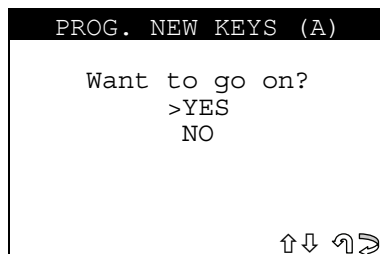
## 2.1 PROGRAMMING NEW KEYS

### 2.1.1 PROGRAMMING NEW KEYS (A)

This function is used to add or delete keys in the immobilizer (without using the PIN CODE).

- To enable the function select "**PROG. NEW KEYS**" and press **ENTER**.

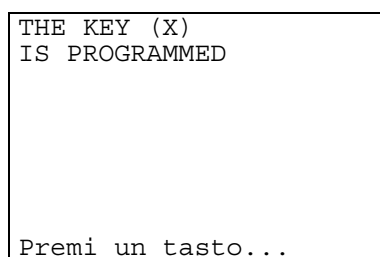
The display will show:



- Select YES/NO and press **ENTER**;
- **No**, to return to the screen showing **IMMOBILIZER functions menu**;
- **Yes**, to programme the new key;
- **ESC** to quit.

Programming of the keys in the car now begins.

If the key has been programmed properly, the display will show:



- Press any key to continue.

```

Insert other keys to
br programmed by
positioning them for
5 sec to ON and 5
sec to OFF.
Then start engine
for some seconds

Press any key...

```

- In sequence enter the remaining keys to be programmed, turning them to the **ON** position for 5 seconds then to the **OFF** position for 5 seconds;
- To end the procedure start the car for a few seconds.

If an error has occurred during programming, an message will appear ERROR 1 (see ch."WARNING/ERROR MESSAGES" of the Operating manual).

### TESTING THE KEY

**ATTENTION:** To check operation of the keys, try starting the car with the memorized keys (wait 30-40 sec. between one ignition and another). If this does not work, repeat the memorizing operation.

### ARCHIVING OPERATIONS - USERS DATA

To enter user data the display will show:

```

Do you want to save
the data?

NO
>YES

↑↓↔➤

```

- Select YES/NO and press **ENTER**;
- **No**, to return to the screen showing **IMMOBILIZER functions menu**;
- **Yes**, proceeds with memorizing the data for the operation just concluded;
- **ESC** to quit.

### ARCHIVING USERS DATA

To enter user data the display will show:

```

- USER DATA -
POS.: 001
DATE: 19/07/01
> SURNAME: XXXXXXXXXXXX
NAME: XXXXXXXXXXXX
REG.NO: XXXXXXXXXXXX

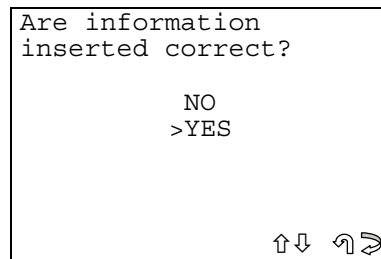
↑↓↔➤

```

- SURNAME (required) (**12 characters**);
  - NAME / REG.NO (optional) (**12 characters**).
- The following data will be saved automatically:
- **POS.:** Position in which the data will be saved;
  - **DATE:** Date of the operation;
  - **MAKE:** Vehicle make for which memorization has taken place;
  - **MODEL:** Vehicle for which memorization has taken place;
  - **YEAR** of the model;
  - **Keys Mem.:** number of keys memorized;
  - **PIN CODE:** (if memorization is confirmed by the operator);
  - **IMMO ID:** Central immobilizer unit identification.

To enter the data:

- Use the ↑↓ keys to go to the item required;
- Press ⇒ to enter and select the field in which the text will be entered;
- Press **ENTER** to confirm;
- Select **ESC** to quit and save the data.



- Select and press **ENTER**;
- **No**, to return to the data entry screen;
- **Yes**, to save the data entered in the archive;
- Select **ESC** to quit.

## 2.1.2 PROGRAMMING NEW KEYS (B)

This function is used to add or delete keys in the immobilizer.

To programme new keys the PIN CODE (reserved number of 4 alphanumeric characters) must be known. This code is provided with the vehicle on consignment to the purchaser and is located on an adhesive label often applied by dealers to the car maintenance handbook and recorded in their DATABASE.

Should the PIN CODE be mislaid, application is made for a replacement to the dealer (preferably the one who sold the car), communicating:

- The chassis number;
- Production site of the immobilizer;
- First immobilizer code;
- Second immobilizer code.

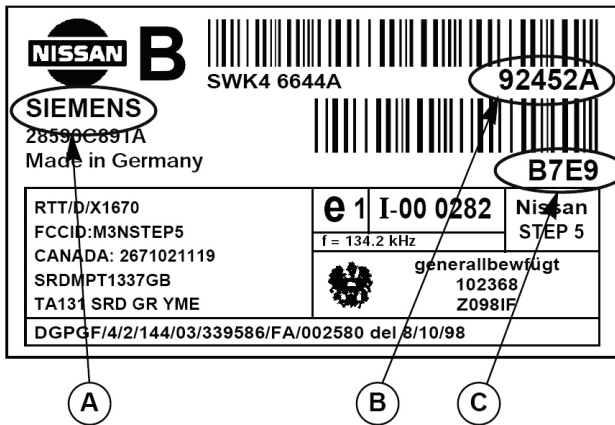
Chassis number, found in the vehicle handbook or stamped on a metal plate located inside the engine bonnet.

The other data are found in the actual immobilizer central unit. To consult them, loosen the screws on the steering column and remove the plastic shells; the immobilizer central unit is attached to the steering block.

Communicate the data stamped on the label: (label **A** or **B**, according to the model) attached to the immobilizer central unit, as illustrated below:

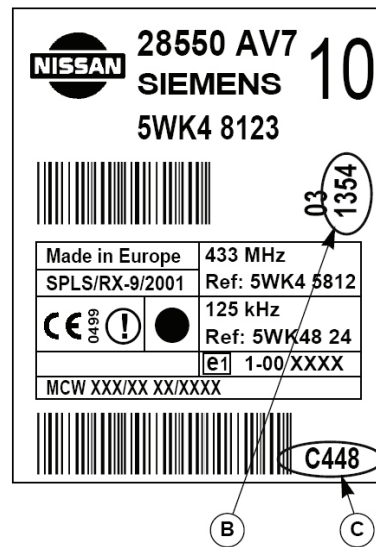
### TYPE "A" LABEL

- Production site (A): MADE IN GERMANY
- First code (B): 92452A
- Second code (C): 87E9



### TYPE "B" LABEL

- Production site (A): **NOT REQUIRED**
- First code (B): **92452A**
- Second code (C): **87E9**





To activate the function, select "**PROG.NEW KEYS**" and press **ENTER**.  
The display will show:

```
PROG. NEW KEYS (B)
If you don't have
PIN CODE
you don't codify
any key
↵
```

- Press **ESC** to quit;
- Press **ENTER** to continue.

The display will show:

```
- DATES INSERTION -
PIN CODE          : XXXX
↵
```

- Enter the **PIN CODE** and press **ENTER**;
- Press **ESC** to quit;
- Press **ENTER** to continue.

Programming of the keys in the car now begins.

- If the wrong PIN code has been entered or errors have occurred during communication, the display will show an message ERROR 1 (see ch."WARNING/ERROR MESSAGES" of the Operating manual);
- If the PIN is correct and the key is properly programmed, the display will show:

```
Turn off the cocpits!
Press any key...
```

Press any key to continue.

```
Insert keys to be
programmed in
sequence and turn
them ON and OFF for
5 sec respectively.
Then start engine
for some seconds
Press any key...
```

- In sequence enter the remaining keys to be programmed, turning them to the **ON** position for 5 seconds then to the OFF position for 5 seconds.
- To end the procedure start the car for a few seconds.

If an error has occurred during programming, an message will appear ERROR 1 (see ch."WARNING/ERROR MESSAGES" of the Operating manual).

## TESTING THE KEY

**ATTENTION:** to check operation of the keys and remote controls memorized, try opening and closing the vehicle with all the remote controls and starting the vehicle with the keys memorized (wait 30-40 sec. between one ignition and another). If this does not work, repeat the memorizing operation.

## ARCHIVING OPERATIONS - USERS DATA

(The flow chart is the same as that described on page 6).

## 2.2

### ERRORS

This function is used to check for any anomalies memorized in the immobilizer.

- After selecting, press **ENTER**.

The display will show:

```
      Please wait:
      Present errors
```

### NO ERRORS

If there are no anomalies in the memory, the display will show:

```
  - PRESENT ERRORS -
      NO ERROR
      DETECTED
      Press any key...
```

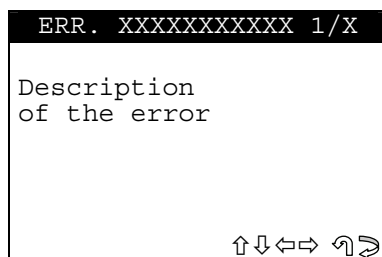
- Press any key.

### ERRORS FOUND

If there are anomalies in the memory the display will show how many (XX) errors there are in the centralized unit memory:

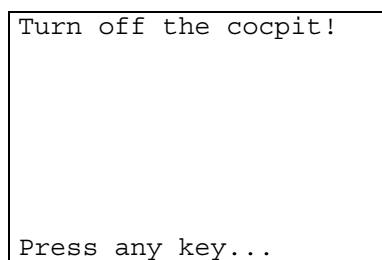
```
  - PRESENT ERRORS -
      Detected
      XX
      errors
      Press any key...
```

Press any key to view a description of the error:



- **ERR: XXXXXXXXXXXX** error code;
- Press  $\uparrow\downarrow\leftarrow\rightarrow$  to scroll all the errors found in the memory;
- Press **ESC** to quit.

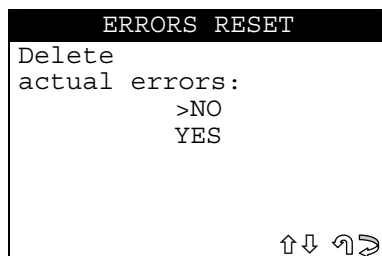
The display will show:



- Turn the key to the **OFF position** and press a key.

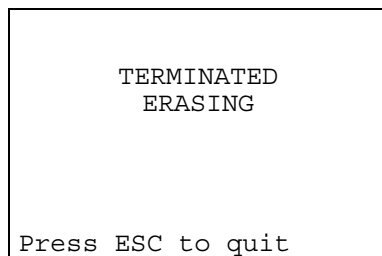
## 2.3 DELETING ERRORS

First select then press **ENTER**, the display will show:



- Select and press **ENTER**;
- **No**, returns to the previous menu;
- **Yes**, deletes the errors memorized;
- Select **ESC** to quit.

The display will show:



- Select **ESC** to quit.



**SILCA S.p.A.**  
Via Podgora, 20 (Z.I.)  
31029 VITTORIO VENETO (TV)  
Tel. 0438 9136 Fax 0438 913800  
[www.silca.it](http://www.silca.it)

In the United Kingdom  
**SILCA Ltd.**  
Kimpton Road - Sutton  
SURREY SM3 9QP  
Tel. 0208 6416515  
Fax 0208 6441181  
E-mail: [sales@silcald.co.uk](mailto:sales@silcald.co.uk)

In Germany  
**SILCA GmbH**  
Siemensstrasse, 33  
42551 VELBERT  
Tel. 02051 2710  
Fax 02051 271172  
E-mail: [info@silca.de](mailto:info@silca.de)

In France  
**SILCA S.A.**  
78440 PORCHEVILLE  
Tel. 01 30983500  
Fax 01 30983501  
E-mail: [info@silca.fr](mailto:info@silca.fr)

In Spain  
**SILCA KEY SYSTEMS S.A.**  
C/Santander 73A  
BARCELONA - SPAIN  
Tel. 0034 934981400  
Fax 0034 932788004  
E-mail: [silca@silca.es](mailto:silca@silca.es)

Members of the Kaba Group

